



3731 Northridge Dr. NW | Unit 1 | Walker, MI 49544 | T: 866.975.7883 | F: 616.233.9549
www.workstuff.biz



play now...recycle later.

RUNNER™

Sit-to-Stand Adjustable Small Tables

Price List
December 2008





Workstuff has reestablished the standard for today's Sit-to-Stand Adjustable Small Tables and Ergonomic Workspace Solutions. All of our products are designed, developed, manufactured, and shipped from our Grand Rapids, MI headquarters. Workstuff is proud to maximize your ergonomic experience with the knowledge that our products are highly tooled, and incorporate patented, proprietary sit-to-stand lift technology.

Our world class products are designed to meet the needs of our customers - and exceed industry ANSI / BIFMA standards. We utilize the finest selection of materials and manufacturing processes to ensure superior performance, styling, and value - but we also strive to contribute to a better world by pursuing sustainability and environmental wisdom.

Products from Workstuff can be viewed on our website. Products can be demonstrated with personal visits from our sales representatives and at our showroom in our corporate headquarters.



play now...recycle later.



RUNNERTM
Sit-to-Stand Adjustable Small Tables

pick and choose...

Select the perfect worksurface color for your environment. So many choices, so much fun.

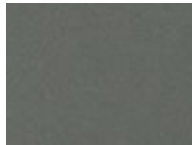


All standard products in their one (1) standard color are as shown on pages 3-5. See all alternative "non-standard" colors below. An upcharge will be applied to all alternative "non-standard" colors. Please refer to Workstuff Runner™ Price List for specific pricing and lead time information.

Thermofoil with Reversed Teardrop Edge - Omnova



Thermofoil



Shark Grey
6005



Crossfire Java
2066



American Natural Maple
2028



Cashmere Fibers
4007

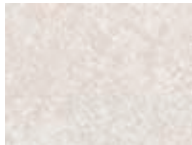


Concrete Fibers
4008

Laminate with T3 3mm Edge - Wilsonart



Laminate



Beige Pampas
4170-60



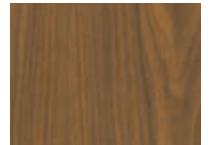
Kensington Maple
10776-60



Wild Cherry
7054-60



Figured Mahogany
7040A-60



Montana Walnut
7110T-60



T3 Edge Trim



Pepperdust
007



Sugar Maple
153



Rainier Cherry
152



Black
300



Black
300

Laminate



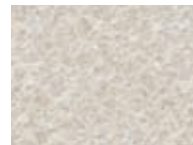
Solar Oak
7816-60



Monticello Maple
7925-38



Titanium EV
4810-60



Silicon EV
4811-60



White Tigris
4783-60

T3 Edge Trim



Khaki Brown
064



Khaki Brown
064



Folkstone
004



Pepperdust
007



Pepperdust
007

Laminate



White Nebula
4621-60



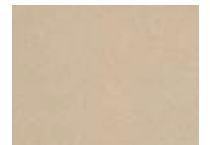
Grey Nebula
4622-60



Graphite Nebula
4623-60



Beige Nebula
4624-60



Desert Zephyr
4841-60

T3 Edge Trim



Dove grey
349



Brownstone
006



Black
300



Pepperdust
007



Khaki Brown
064

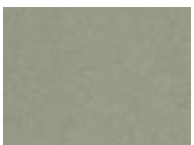
Laminate



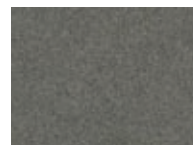
Canyon Zephyr
4842-60



Misted Zephyr
4843-60



Loden Zephyr
4844-60



Twilight Zephyr
4845-60



Frosty White
1573-60

T3 Edge Trim



Khaki Brown
064



Brownstone
006



Khaki Brown
064



Graphite
008



Folkstone
004

Worksurface Upcharges

- Alternative Thermofoil color: \$650 list upcharge for 1 line item per order (4 week lead time)
- Alternative Laminate color: \$1,000 list upcharge for 1 line item per order (4 week lead time)
- Custom Worksurfaces: \$1,650 list upcharge for 1 line item per order (4-6 week lead time)

- Maximum Top Size approximately 30"W x 30"D or 900 cubic inches.
- *Custom worksurface must be approved by Workstuff prior to receiving Order Acknowledgement.
- Custom worksurface can be from any of the laminates shown.

RUNNER™

Sit-to-Stand Adjustable Small Tables

10 DAY QUICK SHIP

24 HOUR ORDER ACKNOWLEDGEMENT

10 YEAR WARRANTY*

FREE FREIGHT*

SHIPS FULLY ASSEMBLED

*\$1500 net order or greater.

RNR-7



Model Number	Worksurface Dimensions	Base Dimensions	Weight	List Price
RNR-7	20"D x 20"W	18"W x 20"D	46	\$2,500

Worksurface

- Laptop Security: TL2020
- Standard Color:



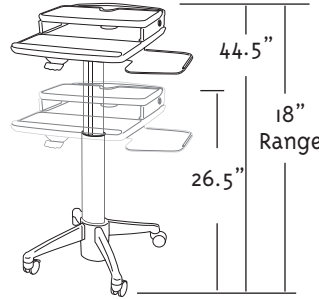
Crossfire Java: 2066
Thermofoil
1" with reversed
tear drop edge

Base

- A20P
- Polished
- 50mm casters
(2 locking/2 non-locking)

Simple Spec

RNR-7 = A20P + TL2020 + color



Recommended Accessories

- Utility Basket (HFH) \$200
- Coiled Power Cord (CPC) \$140
- Cable Lock (CL) \$140
- Power Distribution Strip (PDS3) \$100
- Bar Code Holder (BCH) \$100
- Cable Management Holder (CMH) \$100
- Caster Upgrade**
- 100mm Oversized (HC) Roller Blade Caster (low & high height increased by 2.5 inches) \$200
- Alternative Colors**
- Thermofoil Color upcharge for 1 line item per order (4 week lead time) \$650 list
- Laminate Color upcharge for 1 line item per order (4 week lead time) \$1,000 list
- Custom Worksurface upcharge for 1 line item per order (4-6 week lead time) \$1,650 list

upgrade & accessorize...

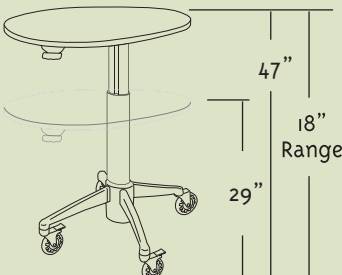
Upgrading and adding accessories customizes Workstuff to perform the exact task you desire. Now that you have found that perfect fit try these on.

Caster upgrade

HC
Oversized Roller Blade*
List Price: \$200
(*low & high height increased by 2.5 inches)



100 mm Highly Mobile Casters
2 Locking/2 Non-Locking



*New height range with oversized roller blade casters.

Accessories

BCH
Bar Code Holder
List Price: \$100



Bar Code Holder - 4"W x 6"D x 3.5"H
Black Finish, Worksurface Mount

CPC
Coiled Power Cord
List Price: \$140



Hospital Grade Power Cord - Black
1.5' Retract, 7.5' Extended 18/3 SJEOW
5-15P/R with 6" Axial Leads

CL
Cable Lock
List Price: \$140



Laptop Security - 6.5' Cable
Gray Finish, Worksurface Mount

CMH
Cable Management Holder
List Price: \$100



15.5"W x 3"D x 2"H - Black
Includes Re-usable Cable Ties
Worksurface Mount

PL
Pencil Ledge
List Price: \$100



Holds pens, pencils, and documents
20" W x 1/2" D x 1/2" H,
Polished Rounded Acrylic

HFH
Utility Basket
List Price: \$200



Holds Binders, File Items
12" W x 4" D x 10" H,
Black Finish, Column Mount

PDS3
Power Distribution Strip
List Price: \$100

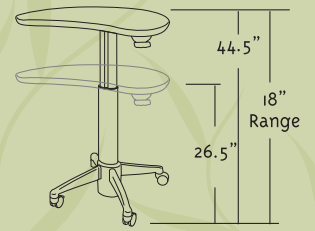


4 AC Outlets
4" Power Cord,
Worksurface Mount

TO2
Tilt Option
List Price: \$200



Tilt Range: +15° to -15°
Adds 2" to Height, Black Finish,
Worksurface Mounts



Ordering Information

Warranty Statement

This warranty is given to the initial purchaser of new commercial products from Workstuff. The warranty covers defects in materials and workmanship. The warranty does not apply to defects resulting from misuse, damage or abuse, normal wear and tear, accident, modification, improper installation or maintenance, third party materials or damage during shipping. The warranty is not transferable and does not cover any subsequent purchases of the products.

The 10 year warranty shall be for all lines and components except as noted: Ascend sit-to-stand lift mechanism is guaranteed for 3 years.

During the 10 year Warranty period, Workstuff, will, at its option, repair or replace any defective product with a comparable product or component. This 10 year warranty is for repair or replacement of defective products only and does not cover any other costs such as removal, installation, or other related expenses.

For warranty service, please contact Workstuff, 3731 Northridge Dr NW, Unit 1, Walker, MI 49544, Attention: Customer Service. Information regarding the claimed defect and date of purchase of the product must be provided. Any defective product must be returned postage or freight prepaid to Workstuff.

THIS 10 YEAR WARRANTY CONSTITUTES THE ONLY WARRANTY FOR THE PRODUCTS AND ALL OTHER WARRANTIES OR REPRESENTATIONS, EXPRESS OR IMPLIED, BY OPERATION OF LAW OR OTHERWISE, INCLUDING BUT NOT LIMITED TO ANY IMPLIED WARRANTY OF MERCHANTABILITY OR FITNESS FOR A PARTICULAR PURPOSE, ARE HEREBY EXPRESSLY DISCLAIMED.

THIS 10 YEAR WARRANTY CONSTITUTES THE SOLE REMEDY AVAILABLE WITH REGARD TO ANY DEFECTIVE PRODUCTS. WORKSTUFF SHALL NOT BE LIABLE FOR ANY INCIDENTAL, INDIRECT, CONSEQUENTIAL OR SPECIAL DAMAGES, INCLUDING WITHOUT LIMITATION, LOSS OF TIME, INCONVENIENCE, OR LOST REVENUES OR PROFITS.

SHIPS FULLY ASSEMBLED

10 DAY QUICK SHIP

24 HOUR ORDER ACKNOWLEDGEMENT

10 YEAR WARRANTY*

FREE FREIGHT*

*\$1500 net order or greater.

Standard Payment Terms and Conditions:

Workstuff reserves the right to revise all terms and conditions, at any time, without prior notice. In the event of a difference between language contained in a customer order or these terms and conditions, these terms shall control.

Credit:

1% 10, NET 30 upon credit approval. Prior to credit approval, payment in full must be received before shipment. If customer account is past due, Workstuff, reserves the right to delay any further outstanding shipments until account is in good standing. Late charges will be 1.5% monthly.

Deposit:

All Purchase Orders received of Net \$25,000 or more will require a 50% deposit. This 50% deposit must be received before the Purchase Order is processed.

Shipment Terms:

Effective October 1, 2008 - Shipments are made F.O.B. Walker, MI 49544. Workstuff products are manufactured or assembled in Walker, Michigan. Please contact Workstuff Customer Service at 866-975-7883 for a freight quote.

*Free Freight with \$1500 net order or greater.

Standard Cartons:

All products shipped and billed in standard cartons only.

Changes to Existing Orders:

Once a customer order is received and processed, order additions/deletions may not be accepted. Please be prepared to place a separate order.

Minimum Order:

No minimum order required; one shipping container per order.

Price and Freight Terms:

Workstuff reserves the right to revise all prices and freight terms, at any time, without notice.

Special and Custom Orders:

Products manufactured and inventoried by Workstuff, to your specifications are non-cancelable and will be shipped and invoiced subject to your purchase order and our availability, in complete order quantities.

Lead times:

The shipping date shown on the face of the order acknowledgment represents Workstuff' best estimate as of the date of the acknowledgment. Workstuff shall not incur any liability of any kind for failure to ship on the acknowledged ship date unless Workstuff has expressly agreed to a firm ship date in a separately signed, written instrument by authorized personnel.

Carrier Shortage or Damage:

Customer bears all responsibility for goods in transit. All carrier shortage or damage issues are resolved directly with the carrier.

Concealed Shortages:

(Items missing from inside any multiple-pack freight piece) Notify our Customer Service Department of any shortages within 72 hours of delivery.

Pricing/Order Entry Errors:

Claims for pricing or order entry errors must be made no later than 20 days from receipt of invoice.

Returned Goods Policy:

Returns will not be accepted without prior written authorization and compliance with shipping instructions provided by the Workstuff Customer Service Department. All goods must be returned on a prepaid basis. A minimum restocking charge of thirty percent (30%) is made on all authorized returns for credit, providing the item is received in resalable condition.

Post-Audit Claims:

Any claim for post-audit adjustments must be submitted to Customer Service within 2 years from date of invoice.

Samples:

Sample products are subject to pre-approval by Customer Service Department.

Product Design:

We reserve the right to change product design, specifications, construction and performance, at any time, without prior notice. Also, we reserve the right to discontinue products, at any time, without prior notice. All dimensions shown are considered for reference purposes and are approximate.

ANSI/BIFMA Standards:

All Workstuff product is tested to exceed all ANSI/BIFMA standards for the respective product categories/classifications.

RNR-1



Model Number
RNR-1

Worksurface Dimensions
15"D x 26"W

Base Dimensions
18"W x 20"D

Weight
36

List Price
\$1,330

Worksurface

- Moped: TK1526
- Standard Color:



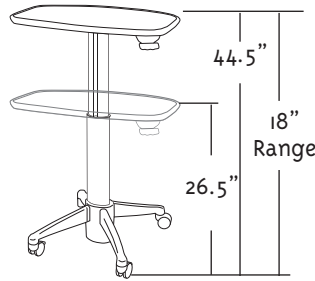
Shark Grey: 6005 Thermofoil 1" with reversed tear drop edge

Base

- A20P
- Polished
- 50mm casters (2 locking/2 non-locking)

Simple Spec

RNR-1 = A20P-LITE + TK1526 + color



Recommended Accessories

- Tilt option (TO2) \$200
- Pencil Ledge (PL) \$100
- Utility Basket (HFH) \$200
- Coiled Power Cord (CPC) \$140
- Cable Lock (CL) \$140
- Power Distribution Strip (PDS3) \$100

Caster Upgrade

- 100mm Oversized (HC) Roller Blade Caster (low & high height increased by 2.5 inches) \$200

Alternative Colors

- Thermofoil Color upcharge for 1 line item per order (4 week lead time) \$650 list
- Laminate Color upcharge for 1 line item per order (4 week lead time) \$1,000 list
- Custom Worksurface upcharge for 1 line item per order (4-6 week lead time) \$1,650 list

RNR-2



Model Number
RNR-2

Worksurface Dimensions
18"D x 28"W

Base Dimensions
24"W x 20"D

Weight
36

List Price
\$1,330

Worksurface

- Kidney: TK1828
- Standard Color:



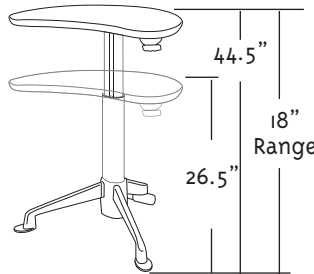
Crossfire Java: 2066 Thermofoil 1" with reversed tear drop edge

Base

- A7P
- Polished
- 7" Roller leg/2 Glide legs

Simple Spec

RNR-2 = A7P-LITE + TK1828 + color



Recommended Accessories

- Tilt option (TO2) \$200
- Pencil Ledge (PL) \$100
- Utility Basket (HFH) \$200
- Coiled Power Cord (CPC) \$140
- Cable Lock (CL) \$140
- Power Distribution Strip (PDS3) \$100

Caster Upgrade

- 100mm Oversized (HC) Roller Blade Caster (low & high height increased by 2.5 inches) \$200

Alternative Colors

- Thermofoil Color upcharge for 1 line item per order (4 week lead time) \$650 list
- Laminate Color upcharge for 1 line item per order (4 week lead time) \$1,000 list
- Custom Worksurface upcharge for 1 line item per order (4-6 week lead time) \$1,650 list

RNR-3



Model Number
RNR-3

Worksurface Dimensions
18"D x 28"W

Base Dimensions
18"W x 20"D

Weight
36

List Price
\$1,330

Worksurface

- Kidney: TK1828
- Standard Color:



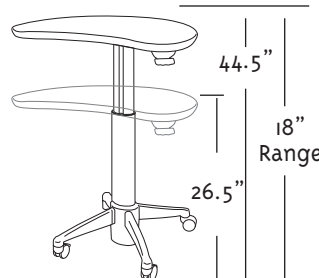
Crossfire Java: 2066 Thermofoil 1" with reversed tear drop edge

Base

- A20P
- Polished
- 50mm casters (2 locking/2 non-locking)

Simple Spec

RNR-3 = A20P-LITE + TK1828 + color



Recommended Accessories

- Tilt option (TO2) \$200
- Pencil Ledge (PL) \$100
- Utility Basket (HFH) \$200
- Coiled Power Cord (CPC) \$140
- Cable Lock (CL) \$140
- Power Distribution Strip (PDS3) \$100

Caster Upgrade

- 100mm Oversized (HC) Roller Blade Caster (low & high height increased by 2.5 inches) \$200

Alternative Colors

- Thermofoil Color upcharge for 1 line item per order (4 week lead time) \$650 list
- Laminate Color upcharge for 1 line item per order (4 week lead time) \$1,000 list
- Custom Worksurface upcharge for 1 line item per order (4-6 week lead time) \$1,650 list

10 DAY QUICK SHIP

24 HOUR ORDER ACKNOWLEDGEMENT

10 YEAR WARRANTY*

FREE FREIGHT*

SHIPS FULLY ASSEMBLED

*\$1500 net order or greater.

RNR-4



Model Number	Worksurface Dimensions	Base Dimensions	Weight	List Price
RNR-4	24\"D x 30\"W	18\"W x 20\"D	48	\$1,600

Worksurface

- Rectangle: LR2430
- Standard Color:



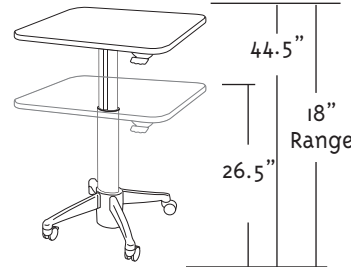
Wilsonart
Beige Pampas: 4170-60
1\" Laminate with T3 3mm
edge: Pepperdust 007

Base

- A20P
- Polished
- 50mm casters
(2 locking/2 non-locking)

Simple Spec

RNR-4 = A20P + LR2430 + color



Recommended Accessories

- Utility Basket (HFH) \$200
- Coiled Power Cord (CPC) \$140
- Cable Lock (CL) \$140
- Power Distribution Strip (PDS3) \$100

Caster Upgrade

- 100mm Oversized (HC) Roller Blade Caster (low & high height increased by 2.5 inches) \$200

Alternative Colors

- Thermofoil Color upcharge for 1 line item per order (4 week lead time) \$650 list
- Laminate Color upcharge for 1 line item per order (4 week lead time) \$1,000 list
- Custom Worksurface upcharge for 1 line item per order (4-6 week lead time) \$1,650 list

RNR-5



Model Number	Worksurface Dimensions	Base Dimensions	Weight	List Price
RNR-5	30\"D x 36\"W	24\"W x 22\"D	50	\$1,600

Worksurface

- Egg: LE3036
- Standard Color:



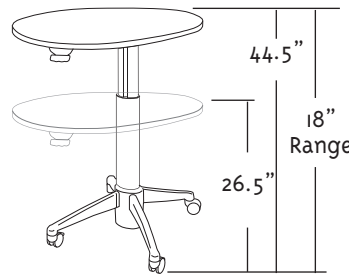
Wilsonart
Beige Pampas: 4170-60
1\" Laminate with T3 3mm
edge: Pepperdust 007

Base

- A28P
- Polished
- 50mm casters
(2 locking/2 non-locking)

Simple Spec

RNR-5 = A28P + LE3036 + color



Recommended Accessories

- Utility Basket (HFH) \$200
- Coiled Power Cord (CPC) \$140
- Cable Lock (CL) \$140
- Power Distribution Strip (PDS3) \$100

Caster Upgrade

- 100mm Oversized (HC) Roller Blade Caster (low & high height increased by 2.5 inches) \$200

Alternative Colors

- Thermofoil Color upcharge for 1 line item per order (4 week lead time) \$650 list
- Laminate Color upcharge for 1 line item per order (4 week lead time) \$1,000 list
- Custom Worksurface upcharge for 1 line item per order (4-6 week lead time) \$1,650 list

RNR-6



Model Number	Worksurface Dimensions	Base Dimensions	Weight	List Price
RNR-6	20\"D x 20\"W	24\"W x 24\"D	50	\$2,500

Worksurface

- Folio: TF2
- 20\"W x 20\"D expandable to 40\"W x 20\"D



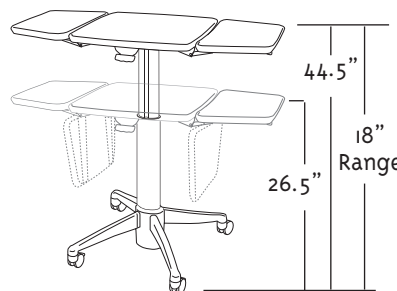
Standard Color:
Shark Grey: 6005
Thermofoil
1\" with reversed tear
drop edge

Base

- A3P
- Polished
- 50mm casters
(2 locking/2 non-locking)

Simple Spec

RNR-6 = A3P + TF2 + color



Recommended Accessories

- Utility Basket (HFH) \$200
- Coiled Power Cord (CPC) \$140
- Cable Lock (CL) \$140

Caster Upgrade

- 100mm Oversized (HC) Roller Blade Caster (low & high height increased by 2.5 inches) \$200

Alternative Colors

- Thermofoil Color upcharge for 1 line item per order (4 week lead time) \$650 list
- Laminate Color upcharge for 1 line item per order (4 week lead time) \$1,000 list
- Custom Worksurface upcharge for 1 line item per order (4-6 week lead time) \$1,650 list